



•Fall Protection •Training •Netting •PPE

ROOF RIDGE ANCHOR INSTRUCTION MANUAL



These Instructions Apply to the Following Model(s):
A00151, A00152

IMPORTANT:

Do not skip this instruction manual. Read the instruction manual carefully before using the equipment. Failure to do so may cause serious injury or death. These instructions serve as the Manufacturer’s Instructions and are to be used as part of an employee training program for the system, as required by OSHA.

Table of Contents

Overview 2
Safety Standards 2
Worker Definitions 3
Applications 3
Limits 4-5
Components and Specifications 6
Notes 7
Installation and Use 8
Maintenance, Cleaning, and Storage 9
Inspection 9
Inspection Log 10
Safety Information 10

Overview

You have just purchased your very own Palmer Safety Fall Protection Roof Ridge Anchor. This manual must be read and understood in its entirety, whereas any specified training course on fall protection can be utilized to provide the necessary knowledge.

All of these instructions need to be made available to the user of the equipment. The user needs to understand how the Roof Ridge Anchor works and how to use it safely. They also need a basic understanding of fall safety equipment used in combination with the Roof Ridge Anchor, such as harnesses and lanyards.

Safety Standards

All applicable OSHA 1926 Subpart M construction standard, OSHA 1910 general industrial standards for fall protection are followed when this product is used as instructed. Standards are regulated depending on the type of work being done. You can review all regulations at regulatory agencies for more information on fall protection systems, including any of the state-specific regulations.

Worker Definitions

NOTE: It is important to know the definition of those who work near or who may be exposed to fall hazards.

Qualified Person: A person with accreditation for this position who has sufficient experience or standing in their industry. They are responsible for reviewing the effectiveness of fall prevention and rescue procedures.

Competent Person: A fall safety coordinator is a person who has been trained to manage all aspects of a company's fall safety program. This includes the actual regulation, the management thereof and its application. A person tasked with identifying existing or foreseeable hazards. They have the power to temporarily stop work to address any concerns they might have.

Authorized Person: An employee who's area of responsibility includes areas where potential or existing fall hazards exist. These employees need to be trained to understand what it takes to work safely around these hazards.

Qualified or Competent person on jobsite is responsible for training and inspection of Roof Ridge Anchor. Please contact your local Palmer Safety Specialist if you have questions or need training. We can provide training on the jobsite.

Applications

WARNING: Using the equipment in ways other than its intended purpose may result in severe injury or death. Maximum 1 attachment per connection point. This anchor is suitable for use with HLLs. A Qualified Person must supervise the design, set-up, installation, and use of HLLs.

Fall Arrest: The Roof Ridge Anchor, which can be used in Personal Fall Arrest (PFAS) applications, is for use by only 1 person and must be used with the appropriate supporting structure. The supporting structure must also withstand loads applied in the advised directions of at least 5000 lbs. Maximum freefall height is 6 feet, or up to 12 feet when in combination with a harness that has been tested for such use. The D-ring needs to be in the dorsal position.

Restraint: The Roof Ridge Anchor can be utilized in Restraint systems. Restraints are used to ensure workers do not get too close to the edge of any fall hazards. Make sure to account for the full length of the lanyard or SRL that you plan on using. The supporting structure must also withstand loads applied in the advised directions of at least 1000 lbs. No item shall be allowed to fall without restraint. Restraint systems can only be used on surfaces where slopes are up 4/12. D-rings that can be used: Dorsal, Chest, Side, Shoulder.

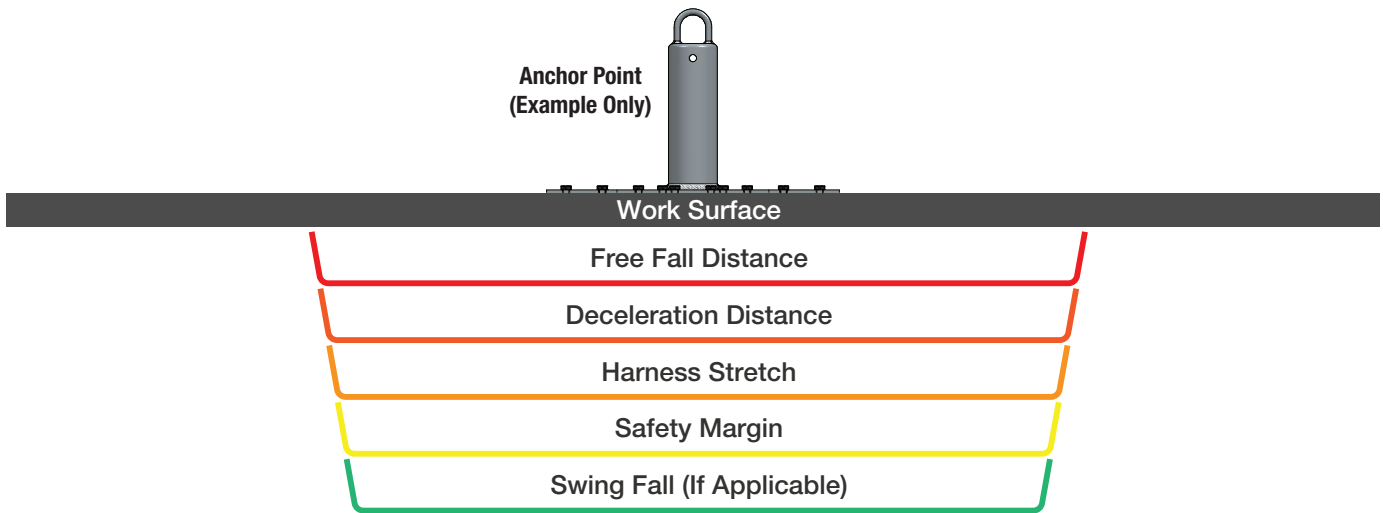
TOTAL user weight capacity range (including person, clothing, tools, and equipment) is 130-420 lbs.

Limits

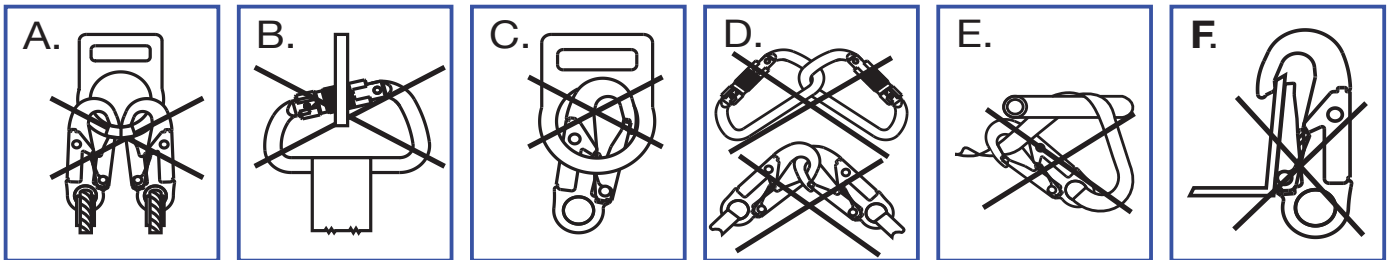
Fall Clearance: There should be enough clearance below the anchorage connector to arrest a fall before the person strikes the ground or an obstacle. When figuring out how far people might fall, there needs to be a safety buffer of 2 feet. People also need to consider the distance they are slowing down at, how tall they are, the length of their lanyard or SRL. They should also think about harness stretch and any other factors that apply.

Diagram shown below is a fall clearance calculation **EXAMPLE ONLY**.

$$\text{TOTAL FALL CLEARANCE} = \text{FREE FALL} + \text{DECELERATION} + \text{STRETCH} + \text{SAFETY MARGIN} + \text{SWING FALL}$$



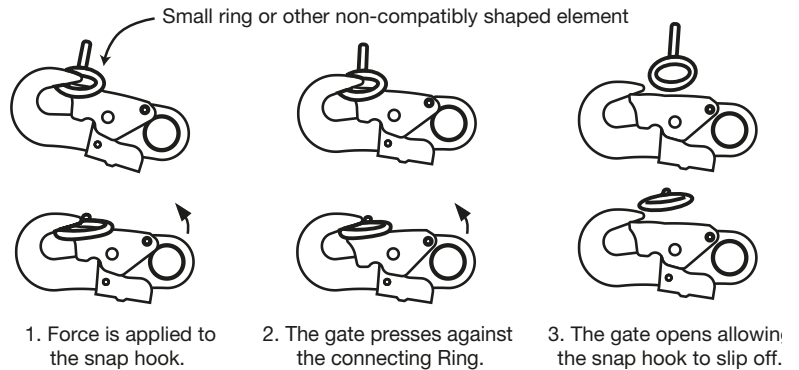
Compatibility: To avoid interference when connecting to the Roof Ridge Anchor, there must be enough space between the hook and its attachment point. This is known as “rolling out” and can cause the gate on the hook to inadvertently open and release. All components must be compatible with the Roof Ridge Anchor and must be approved by a Competent Person. All connectors should be self-closing and self-locking, and should withstand a minimum load of 3,600 lbs.



- A. Two or more connectors should never be attached to a single D-ring.
- B. Never attach a connector that could result in a load on its gate.
- C. Connectors should not be connected in a false engagement. It should be visually confirmed that the connector is fully engaged to the anchor point. Avoid conditions that allow for features that protrude from the connectors to catch on the anchor, giving a false sense of being connected.
- D. Connectors should not be connected to each other.
- E. Connectors should not be connected directly to the webbing or to the rope lanyard or tie back, unless specifically allowed by the manufacturer.

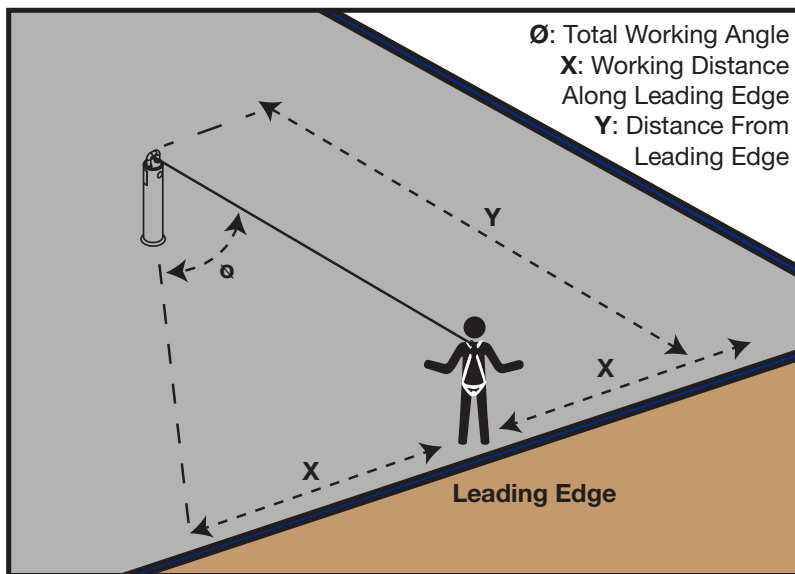
Diagram 2 - Unintentional Disengagement (roll-out)

F. Connectors should not be connected to any object which does not allow the connector gate to close or lock. Anchor shapes that allow roll out to occur should never be used for connection. If the anchor, to which the snap hook or carabiner is attached, is under sized or irregular in shape, then this may allow for the gate of the connector to come in contact with the anchor, thereby causing the connector to open up and possibly disengage from the anchor. This is known as roll out of the connector. See Diagram 2.



G. Do not use connectors on an anchorage object as shown in figure A to F.

Correct Anchorage Positioning: This chart details allowable working zones required to reduce risk of swing falls and improper side loading. ALWAYS adhere to information specified by chart.



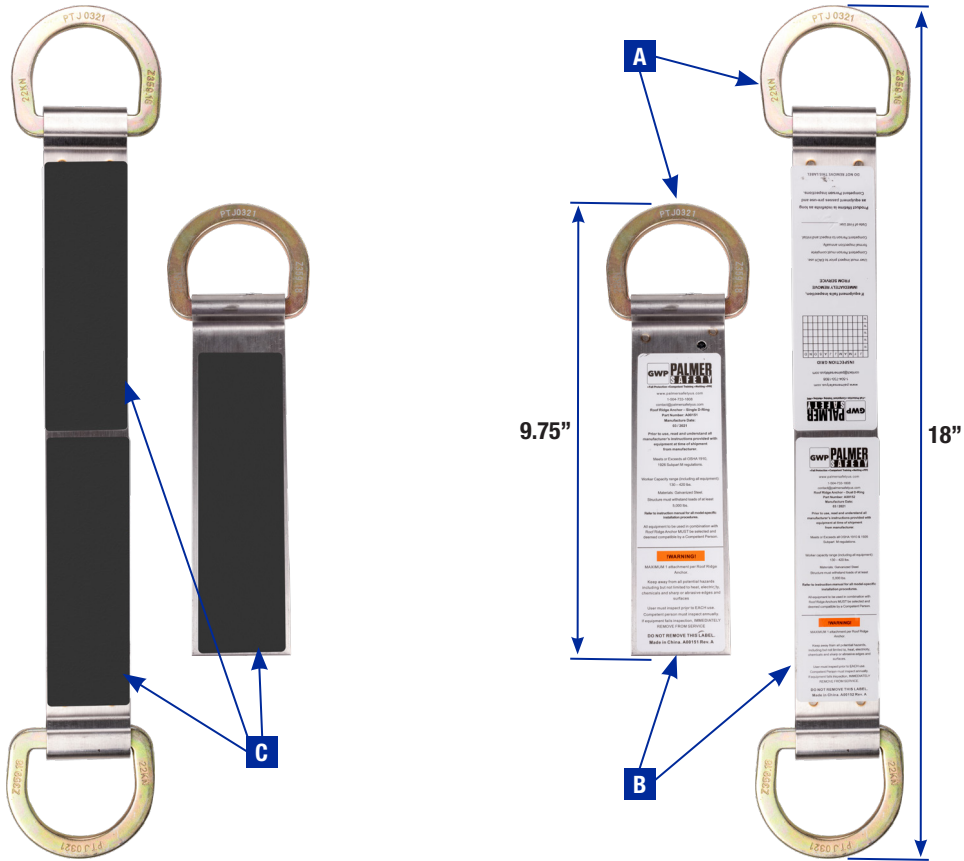
Anchor Distance From Leading Edge (Y)	Working Distance Along Roof Edge (Either Direction) (X)	Working Angle From Perpendicular (Ø)
6'	8'	53°
10'	9' - 9"	45°
15'	11' - 7"	38°
20'	13' - 3"	33°
25'	14' - 6"	30°
30'	16'	28°
35'	17' - 2"	26°
40'	18' - 3"	24°
45'	19' - 4"	23°
50'	19' - 10"	21°
55'	21' - 4"	21°
60'	22' - 3"	21°

For example, if the anchorage connector is 6' from the leading edge (Y), the working distance (X) is 8' in each direction from the perpendicular, which translates to a 53° working angle.

Swing Falls: When using or installing any anchors, think about eliminating swing fall hazards. Swing falls happen when the anchor point is not directly over the object being secured. Always make your anchors as close to perpendicular as possible to the load. Swing falls can increase the chances of serious injury or death if there is a fall.

Product Components

- A. D-Ring (connection point)
- B. Anchor Plate
- C. Butyl Strip



Product Specifications

A00151 Overall Length 9.75”, Roof Ridge Anchor With 1 D-Ring

A00152 Overall Length 18”, Roof Ridge Anchor With 2 D-Rings

Maximum 1 connection per anchor.

Worker Weight Range: 130-420 pounds including all tools and equipment.

MBS (Minimum Breaking Strength): 5,000 pounds

Materials: Butyl, Stainless Steel and Galvanized Steel

Notes

- 1.) Make sure all workers have read and understand the warnings associated with this equipment.
- 2.) Make sure all workers are using other fall protection methods while installing this roof anchor.
- 3.) Not for worker positioning or equipment handling or suspension
- 4.) Check to be sure the intended installation location is free from all hazards and damage, and will support the loads applied by the anchor, as determined by a Competent Person.
- 5) Maximum roof pitch is vertical. NEVER install past vertical. Do not install on the underside of a beam.
- 6) The Roof Ridge Anchor is NOT for use in a HLL system.
- 7) Can be installed on Wood or Metal substrates.
 - * Wood minimum thickness is 3-1/2". Fasteners: 8 each 3-1/2" 16d stainless steel spiral nails in all fastener holes fully embedded in the substrate.
 - * Metal minimum thickness is 20 gauge. Fasteners: 8 each 2" #14-10 sheet metal screws in all fastener holes fully embedded in the substrate.
- 8) The Roof Ridge Anchor is suitable for loading only in the directions allowed. Check the chart on page 5 for allowable angle away from center. NEVER load the anchor in inappropriately!
- 9.) The Roof Ridge Anchor are for permanent installations only. Roof Ridge Anchors must never be re-installed!
- 10.) Remove from service immediately if any damage or defects are found or if the anchor has been subjected to a fall.
- 11) Use Roof Ridge Anchor only with compatible PFAS as deemed compatible by a Competent Person.
- 12) Minimize or eliminate swing fall hazards.

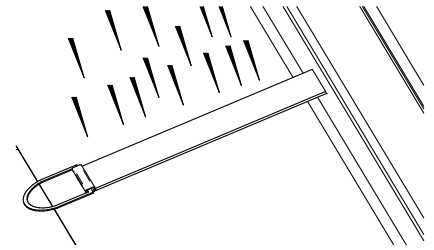


Installation and Use

1. Refer to the installation instructions specific to your model.
2. Make sure you install the anchor with the label up and the butyl strip down.
3. The Roof Ridge Anchors can be installed directly onto the roof shingles or ridge cap. The butyl strip helps to provide a waterproof seal between the Roof Ridge Anchor and the shingles. You may install the Roof Ridge Anchor underneath the ridge cap or roof shingle if necessary. If installing underneath the shingles be sure ALL the shingling in the selected location is removed.

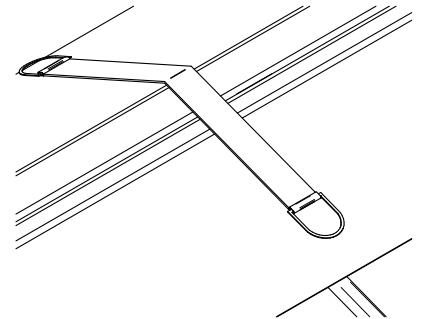
MODEL A00151

1. Identify the location for installation of the Roof Ridge Anchor. Installation must be done so that all loading of the anchor will be in line with the anchor plate. Do not load over the ridge!
2. Place anchor in the selected location. Install 8 each 3-1/2" 16d stainless steel spiral nails for wood installations or 8 each 2" #14-10 sheet metal screws for metal installations into ALL fastener holes in the anchor plate. Use the appropriate fastener type for your substrate material. Be sure to use a fastener in every fastener hole in the anchor plate.
3. If you removed shingles or ridge caps to install the Roof Ridge Anchor, replace them. Follow the instructions from the roof shingle or ridge cap manufacturer. The shingles or ridge cap must cover the anchor plate, but the D-Ring must not be covered.



MODEL A00152

1. Identify the location for installation of the Roof Ridge Anchor. Installation must be done so that all loading of the anchor will be in line with the anchor plate. Do not load over the ridge!
2. Bend the Roof Ridge Anchor in the center to match the angle of the ridge. Place the center of the anchor plate on the roof ridge. Ensure a good fit over the roof ridge.
3. Place the anchor in the selected location. Install 8 each 3-1/2" 16d stainless steel spiral nails for wood installations or 8 each 2" #14-10 sheet metal screws for metal installations into ALL fastener holes in the anchor plate. Use the appropriate fastener type for your substrate material. Be sure to use a fastener every fastener hole in the anchor plate.
4. If you removed shingles or ridge caps to install the Roof Ridge Anchor, replace them. Follow the instructions from the roof shingle or ridge cap manufacturer. The shingles or ridge cap must cover the anchor plate, but the D-Rings must not be covered.



Maintenance, Cleaning, and Storage

If Roof Ridge Anchor fails inspection in any way, immediately remove it from service, and contact Palmer Safety to inquire about its return or repair.

Cleaning after use is important for maintaining the safety and longevity of Roof Ridge Anchor. Remove all dirt, corrosives, and contaminants from Roof Ridge Anchor before and after each use. If Roof Ridge Anchor cannot be cleaned with plain water, use mild soap and water, then rinse and wipe dry. NEVER clean Roof Ridge Anchor with corrosive substances.

Prior to use, store equipment where it will not be affected by heat, light, excessive moisture, chemicals, or other degrading elements.

Inspection

- 1.) Anchor should be inspected before each use.
If any damage is found or system is involved in a fall remove from jobsite immediately.
- 2.) Anchor should be inspected by a Competent Person at a minimum of every 6 months.
- 3.) All inspections should be documented.

Palmer Safety would be glad to help with any inspections.

Inspection Log

SERIAL NUMBER:													
MODEL NUMBER:													
DATE PURCHASED:							DATE OF FIRST USE:						

	J	F	M	A	M	J	J	A	S	O	N	D
YR												
YR												
YR												
YR												
YR												

Product lifetime is indefinite as long as it passes pre-use and Competent Person inspections. User must inspect prior to EACH use. Competent Person other than user must complete formal inspection annually. Competent Person to inspect and initial.

This inspection log must be specific to one Roof Ridge Anchor. All inspection records must be made visible and available to all users at all times.

If equipment fails inspection or is involved in a fall **REMOVE FROM SERVICE IMMEDIATELY.**

INSPECTION DATE	INSPECTION ITEMS NOTED	CORRECTIVE ACTION	MAINTENANCE PERFORMED
Approved by:			
Approved by:			
Approved by:			
Approved by:			
Approved by:			

Safety Information

WARNING: Failure to understand and comply with safety regulations may result in serious injury or death. Regulations included herein are not all-inclusive, are for reference only, and are not intended to replace a Competent Person's judgment or knowledge of federal or state standards.

Notes:

Notes: